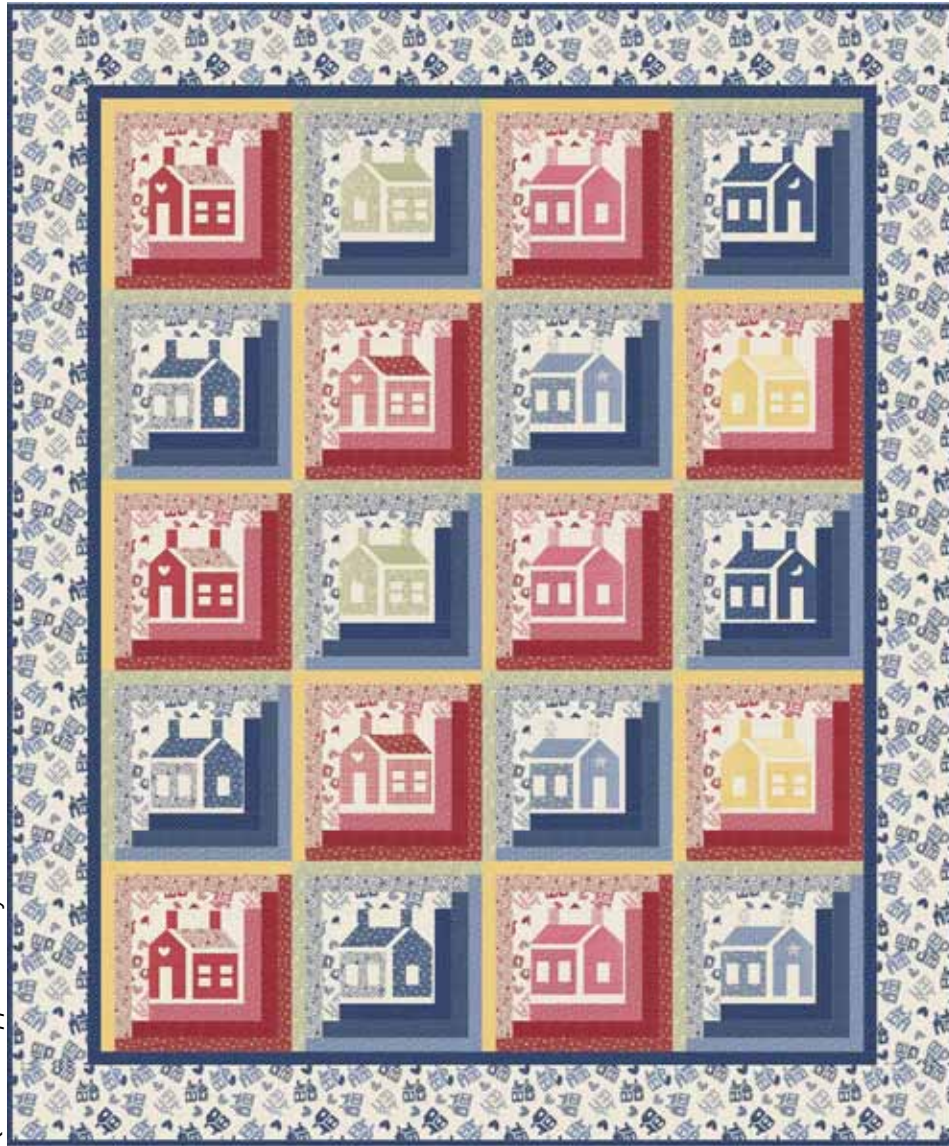




One Room Schoolhouse c. 1920

Fabric Collection by Sara Morgan
One Room Schoolhouse quilt design by Toby Lischko



Quilt size: approximately 69" x 83"

Washington Street Studio



One Room Schoolhouse c. 1920

One Room Schoolhouse quilt design by Toby Lischko

Skill Level: Confident Beginner • Finished Block Size: 14" square • Finished Quilt Size: 69" x 83"

Yardage Requirements:

| | |
|-------------------------------------|--|
| Fabric A: ONRS 3050 MU | 2 1/2 panels (20 schoolhouse squares) |
| Fabric B: ONRS 3055 P | 1/3 yard |
| Fabric C: ONRS 3051 R | 3/8 yard |
| Fabric D: ONRS 3058 R | 1/2 yard |
| Fabric E: ONRS 3057 R | 1/2 yard |
| Fabric F: ONRS 3056 R | 1/2 yard |
| Fabric G: ONRS 3054 Y | 1/2 yard |
| Fabric H: ONRS 3054 N | 1 1/4 yards |
| Fabric I: ONRS 3051 B | 2 yards |
| Fabric J: ONRS 3058 B | 1/2 yard |
| Fabric K: ONRS 3057 B | 1/2 yard |
| Fabric L: ONRS 3055 LB | 1/2 yard |
| Fabric M: ONRS 3057 G | 1/2 yard |
| Backing: ONRS 3051 MU | 5 yards |
| Batting: | 77" x 90" |

Cutting Instructions:

Please read all instructions carefully before beginning.

Strips are cut across the width of fabric unless otherwise stated. LOF - parallel to selvages. All seams are sewn with a 1/4" seam unless otherwise stated.

Fabric A: ONRS 3050 MU

1. Cut (20) 7 1/2" squares from panel, centering motif within square. Use a square ruler or your own 7 1/2" square template.

Fabric B: ONRS 3055 P

1. Cut (5) 1 3/4" strips. Sub cut (10) 1 3/4" x 8 3/4" rectangles and (10) 1 3/4" x 7 1/2" rectangles.

Fabric C: ONRS 3051 R

1. Cut (6) 1 3/4" strips. Sub cut (10) 1 3/4" x 10" rectangles and (10) 1 3/4" x 8 3/4" rectangles.

Fabric D: ONRS 3058 R

1. Cut (7) 1 3/4" strips. Sub cut (10) 1 3/4" x 11 1/4" rectangles and (10) 1 3/4" x 10" rectangles.

Fabric E: ONRS 3057 R

1. Cut (8) 1 3/4" strips. Sub cut (10) 1 3/4" x 12 1/2" rectangles and (10) 1 3/4" x 11 1/4" rectangles.

Fabric F: ONRS 3056 R

1. Cut (8) 1 1/2" strips. Sub cut (10) 1 1/2" x 13 1/2" rectangles and (10) 1 1/2" x 12 1/2" rectangles.

Fabric G: ONRS 3054 Y

1. Cut (9) 1 1/2" strips. Sub cut (10) 1 1/2" x 14 1/2" rectangles and (10) 1 1/2" x 13 1/2" rectangles.

Fabric H: ONRS 3022 P

1. Cut (5) 1 3/4" strips. Sub cut (10) 1 3/4" x 8 3/4" rectangles and (10) 1 3/4" x 7 1/2" rectangles.
2. Cut (7) 1 1/2" strips for Border 1.
3. Cut (8) 2 1/4" strips for binding.

Fabric I: ONRS 3051 B

1. Cut (6) 1 3/4" strips. Sub cut (10) 1 3/4" x 10" rectangles and (10) 1 3/4" x 8 3/4" rectangles.
2. Cut (9) 5 1/2" strips for Border 2.

Fabric J: ONRS 3058 B

1. Cut (7) 1 3/4" strips. Sub cut (10) 1 3/4" x 11 1/4" rectangles and (10) 1 3/4" x 10" rectangles.

Fabric K: ONRS 3057 B

1. Cut (8) 1 3/4" strips. Sub cut (10) 1 3/4" x 12 1/2" rectangles and (10) 1 3/4" x 11 1/4" rectangles.

Fabric L: ONRS 3055 LB

1. Cut (8) 1 1/2" strips. Sub cut (10) 1 1/2" x 13 1/2" rectangles and (10) 1 3/4" x 12 1/2" rectangles.

Fabric M: ONRS 3055 LB

1. Cut (9) 1 1/2" strips. Sub cut (10) 1 1/2" x 14 1/2" rectangles and (10) 1 3/4" x 13 1/2" rectangles.

Piecing Instructions:

(Tip: Measure your sections as you go for more accurate piecing. Press to last piece sewn.)

Block 1 Assembly

1. Start with one 7 1/2" A square, sew 1 3/4" x 7 1/2" B strip to the right side (Figure 1). Press to B.
2. Sew 1 3/4" x 8 3/4" B strip to the bottom (Figure 2).
3. Sew 1 3/4" x 8 3/4" C strip to the left side (Figure 3).
4. Sew 1 3/4" x 10" C strip to the top (Figure 4).
5. Continue sewing with the next size up strips in a clockwise manner: 1 3/4" x 10 and 1 3/4" x 11 1/4" D strips, 1 3/4" x 11 1/4" and 1 3/4" x 12 1/2" E strips, 1 1/2" x 12 1/2" and 1 1/2" x 13 1/2" F strips, and 1 1/2" x 13 1/2" and 1 1/2" x 14 1/2" G strips (Figure 5).



Block 2 Assembly

1. Repeat steps 1 through 5 with 7 1/2" A square and the H, I, J, K, L, and M strips (Figure 6).

Quilt Assembly: (Refer to quilt diagram)

1. Following the quilt diagram, place Blocks 1 and 2, four across and five down, alternating them in each row.
2. Sew blocks together. Press rows in opposite directions.
3. Sew rows together matching seams. Press in either direction.
4. Sew (7) 1 1/2" H strips together with diagonal seams. Press seams open.
5. Measure through the vertical center of the quilt and trim two strips to this length. Match centers and sides, pin and sew to sides of the quilt. Press to border.
6. Measure through the horizontal center and trim

- two strips to this width. Match centers and sides, pin and sew to top and bottom of quilt. Press to border.
7. Repeat steps 4-6 using (9) 5 1/2" I strips.

Finishing:

1. Press fabric well. Prepare backing to measure 77" x 90".
2. Layer backing, batting and quilt top. Baste layers together.
3. Quilt as desired.
4. Trim layers even with top.
5. Join (8) 2 1/4" H binding strips with diagonal seams. Press seams open. Press strip in half lengthwise with wrong sides together to make double-fold binding. Sew binding to quilt using your favorite method.
Tip: Lay binding on the quilt before sewing to make sure that the binding seams do not meet any of the corners.
6. Make a label and sew to back of the quilt.

Visit Toby Lischko at: www.gatewayquiltsnstuff.com

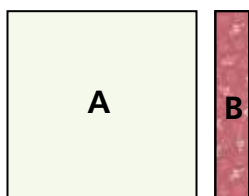


Figure 1

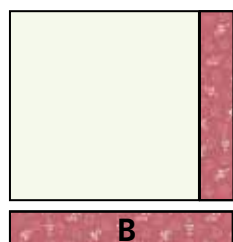


Figure 2

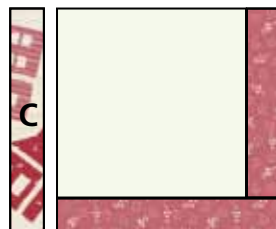


Figure 3

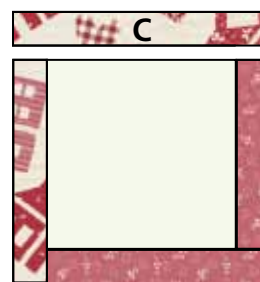


Figure 4

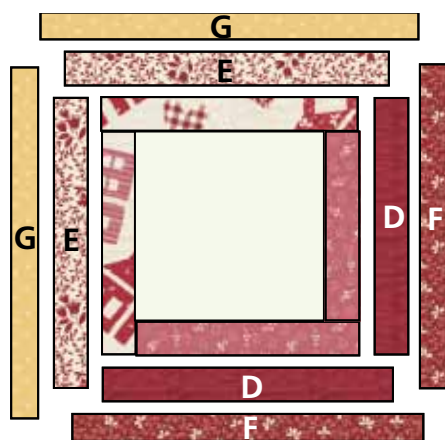


Figure 5 Make 10.

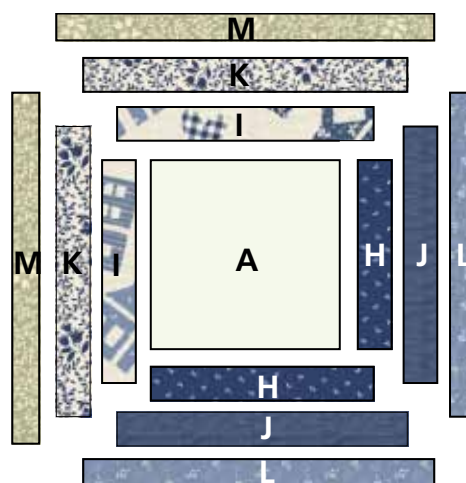
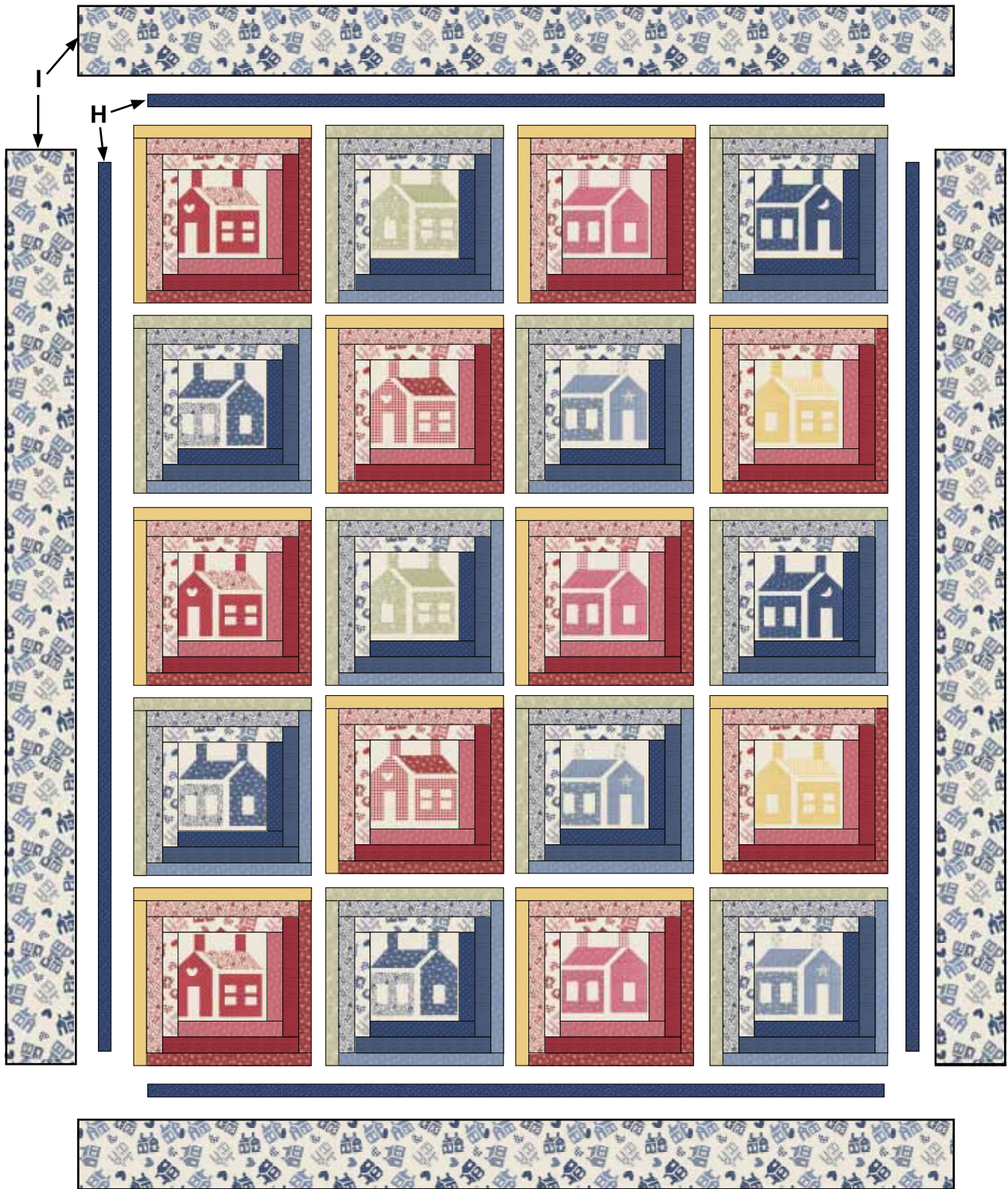


Figure 6 Make 10.





Quilt Diagram

One Room Schoolhouse c. 1920

Fabric Collection
by Sara Morgan



ONRS 3050 B



ONRS 3050 MU*



ONRS 3050 R



ONRS 3051 B*



ONRS 3051 MU†



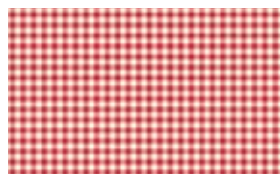
ONRS 3051 R*



ONRS 3052 B



ONRS 3052 P



ONRS 3052 R



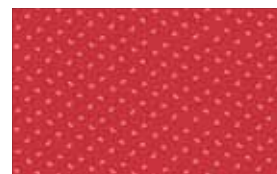
ONRS 3052 Y



ONRS 3053 G



ONRS 3054 N*



ONRS 3054 R



ONRS 3054 Y*



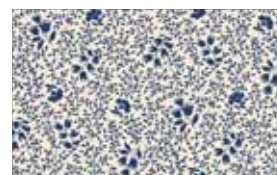
ONRS 3055 LB*



ONRS 3055 P*



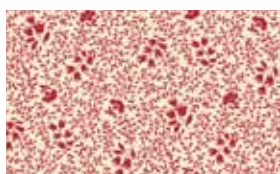
ONRS 3056 R*



ONRS 3057 B*



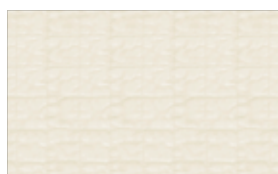
ONRS 3057 G*



ONRS 3057 R*



ONRS 3058 B*



ONRS 3058 E



ONRS 3058 R*

* Used in project
† Suggested backing



www.washingtonstreetstudio.com

Washington Street Studio • 208 Clock Tower Square, Portsmouth, RI 02871 • 800-351-9087

△ 100% cotton ♦ Cold wash & dry ♦ 43" / 44" ♦ Colors may vary due to printing process