

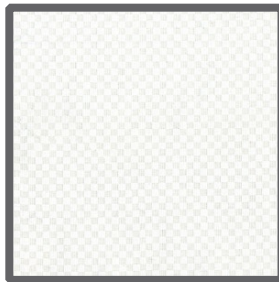
# FABRIC REQUIREMENTS



**DC4123 Spring - Primavera**  
1 Panel or 2/3 Yard



**K1160 (Sky Blue) Krystal**  
1 1/2 yard



**CX2781 Snow Tiny Check**  
5/8 yard



**DC4125 Spring Primavera Blossom**  
Fat 1/4



**DC4124 Spring Primavera Garden**  
Fat 1/4

**Backing - 55" x 55" and Batting - 55" x 55" required**

# Primavera Windows



Size: Approximately 50"W x 49"H

**Quilt designed by Marinda Stewart**  
Skill Level: Confident Beginner



118 West 22nd Street 5th Floor New York, NY 10011  
Tel: 212.704.0774 Fax: 212. 633. 0272 email: info@michaelmillerfabrics.com

[www.michaelmillerfabrics.com](http://www.michaelmillerfabrics.com)

**"Primavera Windows"**  
Quilt by Marinda Stewart

Size: Approximately 50"W x 49"H - Skill Level: Confident Beginner

**Materials**

Fabric	Yardage	Cutting
DC4123 Spring Primavera	1 complete panel or 2/3 of a yard	(1) 23" square piece (1) 11" W x 23" H piece
DC4125 Spring Primavera Blossom	Fat 1/4	(4) 5 1/2" H x 7 1/2" W pieces (4) 4 1/2" squares
DC4124 Spring Primavera Garden	Fat 1/4	(4) 5 1/2" H x 6 1/2" W pieces
CX2781 Snow Tiny Check	5/8 yard	(7) 1 1/2" x 11 1/2" (2) 2" x 11 1/2" (3) 1 1/2" x 9 1/2" (7) 1 1/2" x 13 1/2" (3) 1 1/2" x 15 1/2" (4) 1 1/2" x 5 1/2" (2) 1 1/2" x 4 1/2" (4) 2" x 26 1/2" (2) 2" x 23 1/2" (1) 1 1/2" x 23 1/2"
K1160 (Sky Blue) Krystal	1 1/2 yard	(3) 2 1/2" x 18 1/2" (1) 3 1/2" x 17 1/2" (1) 2 1/2" x 17 1/2" (1) 4 1/2" x 11 1/2" (1) 3 1/2" x 11 1/2" (1) 4 1/2" x 10 1/2" (1) 2 1/2" x 14 1/2" (1) 2 1/2" x 28 1/2" (1) 5 1/2" x 20 1/2" (1) 2 1/2" x 16 1/2" (1) 3 1/2" x 16 1/2" (1) 3 1/2" x 15 1/2" (1) 5 1/2" x 26 1/2" (1) 4 1/2" x 31 1/2" (5) 2 1/2" x W.O.F. for binding

**Additional Materials:** 55" x 55" Backing, 55" x 55" Batting, Thread to match, Straight Pins, Scissors, Acrylic Ruler, Rotary Cutter, and Mat.

**Disclaimers**

This pattern is provided as a courtesy to quilt stores, catalogs, and quilters. Michael Miller Fabrics, LLC is not responsible for the accuracy of any kits packaged to accompany this pattern. Please direct any inquiries to the kit maker.

Yardage requirements for this pattern may allow for excess yardage to accommodate specific placement of motifs or to allow for any fussy-cutting to achieve the finished quilt design.

While every attempt has been made to give accurate measurements, yardage requirements, and construction directions; this does not allow personal variations in measuring, cutting, and or sewing. The enclosed directions were used in the construction of the original quilt.

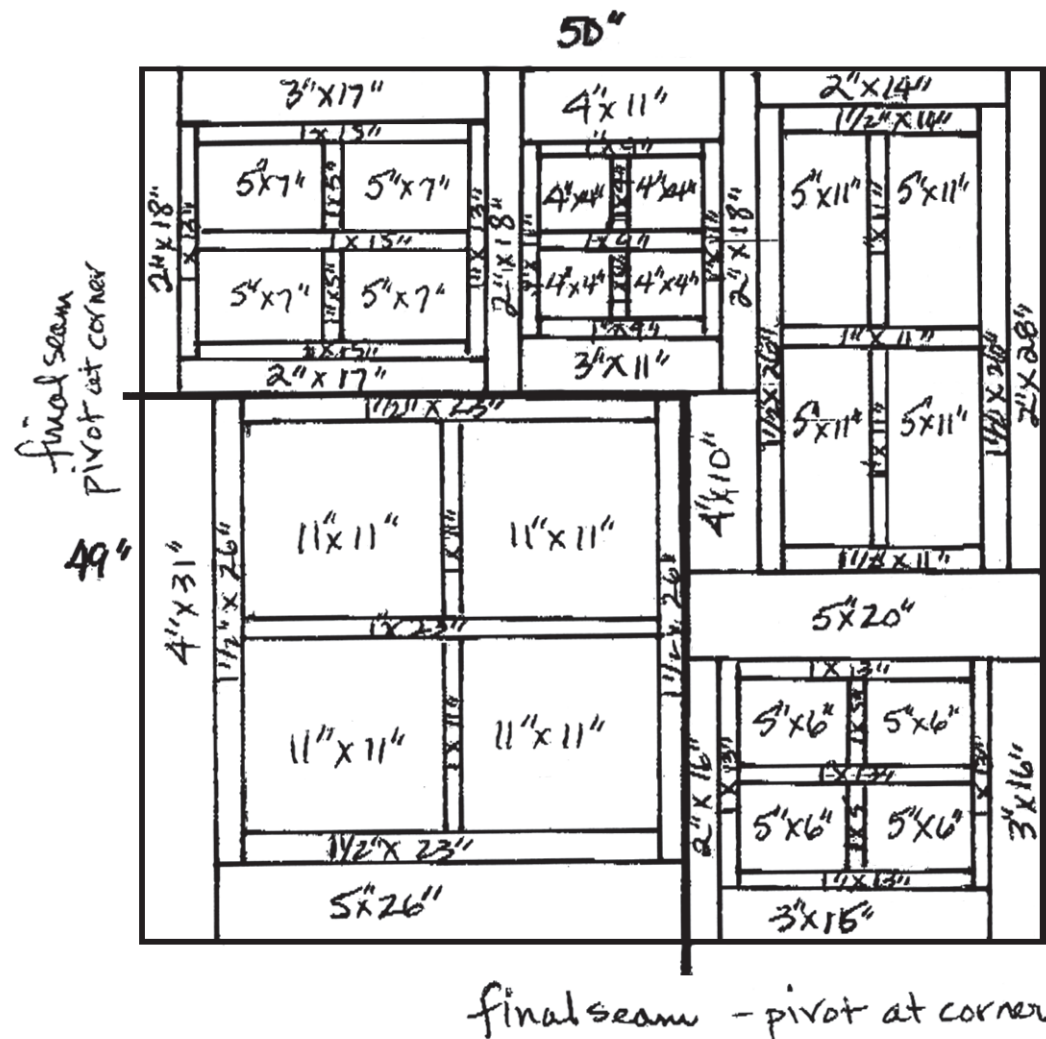
**Directions**

1. Cut DC4123 23" square into four 11 1/2" equal pieces. Join the two top squares with a CX2781 1 1/2" x 11 1/2" strip. Join the bottom squares the same way. Join the squares through the center with one CX2781 1 1/2" x 23 1/2" strip. Sew one CX2781 2" x 23 1/2" strip to the top and bottom of the window. Sew one CX2781 2" x 26 1/2" strip to each side. Sew one K1160 5 1/2" x 26 1/2" piece to the bottom. Sew one K1160 4 1/2" x 31 1/2" strip to the left side. Set window unit aside.
2. Cut DC4123 11" x 23" panel into four equal pieces each 5 1/2" W x 11 1/2" H. Join the two top pieces with a CX2781 1 1/2" x 11 1/2" strip between them. Repeat for the bottom rectangles. Join the top and bottom together using one CX2781 1 1/2" x 11 1/2" strip. Sew one CX2781 2" x 11 1/2" strip to the top and bottom of the window. Sew one CX2781 2" x 26 1/2" strip to each side. Sew one K1160 2 1/2" x 14 1/2" piece to the top of the window. Sew one K1160 2 1/2" x 28 1/2" piece to the right side of the window. Set aside.
3. Top left window. Join two DC4125 5 1/2" x 7 1/2" rectangles together with a CX2781 1 1/2" x 5 1/2" strip between them. Make two pairs. Join the pairs in the center using one CX2781 1 1/2" x 15 1/2" strip. Sew one CX2781 1 1/2" x 15 1/2" strip to the top and bottom of the window. Sew one CX2781 1 1/2" x 13 1/2" strip to each side. Sew one K1160 3 1/2" x 17 1/2" piece to the top and one K1160 2 1/2" x 17 1/2" piece to the bottom. Sew one K1160 2 1/2" x 18 1/2" piece to each side of the window. Set aside.
4. Small middle window. Join two DC4125 4 1/2" squares together with

a CX2781 1 1/2" x 4 1/2" strip between them. Make two pairs. Join the pairs in the center with one CX2781 1 1/2" x 9 1/2" strip. Sew one CX2781 1 1/2" x 9 1/2" strip to the top and bottom of the window. Sew one CX2781 1 1/2" x 11 1/2" strip to each side. Sew one K1160 4 1/2" x 11 1/2" piece to the top of the window. Sew one K1160 3 1/2" x 11 1/2" piece to the bottom. Sew one K1160 2 1/2" x 18 1/2" piece to the right side of the window. Sew the window unit to the right side of the top left window unit. Sew one K1160 4 1/2" x 10 1/2" piece to the right side of the two-window unit on the bottom as shown in the diagram.

5. Sew the long rectangle window unit to the right side of the two window unit. Sew one K1160 5 1/2" x 20 1/2" piece to the bottom edge of the rectangle window. Set aside.
6. For lower right window. Join two DC4124 5 1/2" x 6 1/2" rectangles together with a CX2781 1 1/2" x 5 1/2" strip between them. Make two pairs. Join the pairs in the center with one CX2781 1 1/2" x 13 1/2" strip. Sew one CX2781 1 1/2" x 13 1/2" strip to the top and bottom of the unit. Sew one CX2781 1 1/2" x 13 1/2" strip to each side. Sew one K1160 3 1/2" x 15 1/2" piece to the bottom of the window. Sew one K1160 2 1/2" x 16 1/2" piece to left side of the window and one K1160 3 1/2" x 16 1/2" piece to the right side. Sew the window unit to the bottom of the rectangle window as shown.
7. Sew large square window unit into the quilt as shown on the diagram. Pivot at the corner.
8. Layer backing, batting, and quilt top. Baste.
9. Quilt as desired.
10. Piece K1160 as needed to make binding. Bind all edges to finish.

-- Placement Guide --



\* All measurement guide are finished measurements

\* Ursula @ 2007