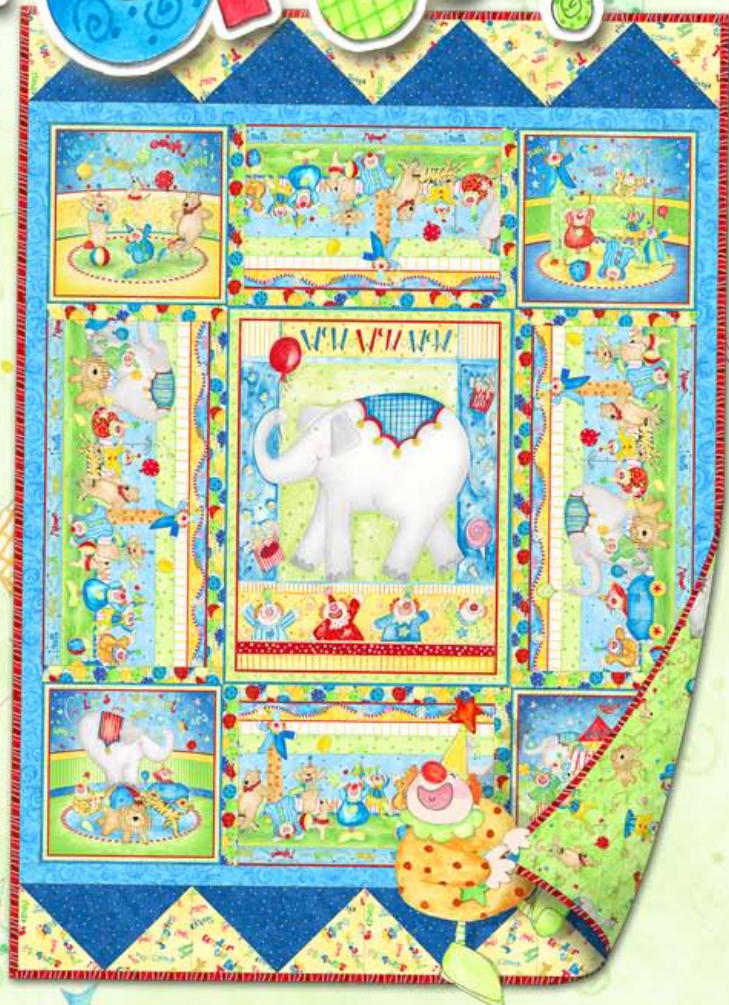


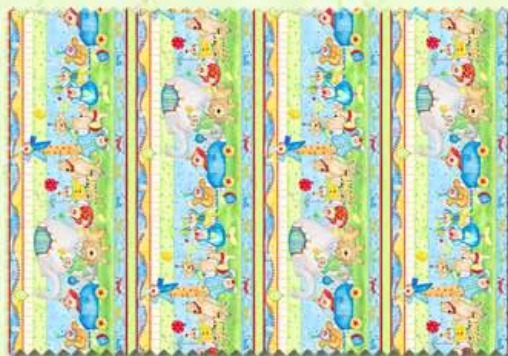
What a Circus!

PROJECT SHEET - Q555-37-555

FEATURING THE 'CLOWNING AROUND' COLLECTION
Q1454 by Pat Yulle



Fabric A
29150-745
1 Panel (2/3 yard)



Fabric B
29151-472
3/4 yard

Finished Quilt Size: 43" x 59"



Fabric C
(Backing only)
29152-735
3 yards



Fabric D
29154-537
1/2 yard



Fabric E
29155-453
3/8 yard



Fabric F
(Binding only)
29156-314
1/2 yard



Fabric G
29157-444
1/3 yard



Fabric H
29158-457
1/2 yard

Wilmington Prints: A World of Possibilities



What a Circus!

Please read all instructions carefully before starting. All instructions include a 1/4" seam allowance and strips are cut from selvage to selvage unless otherwise stated.

1. Cut the following:

Fabric A - cut individual squares by centering designs evenly - cut 4 - 11 1/2" squares and 1 - 18" x 23 1/2" (center rectangle)


Fabric B - cut 2 - 10 1/2" x 16" (TOP and BOTTOM) and cut 2 - 10 1/2" x 21 1/2" (SIDE) borders from identical stripes

Fabric D - cut 2 - 6 1/8" strips, subcut 8 - 6 1/8" squares, cut in half diagonally  for 16 triangles

Fabric E - cut 6 - 1 1/2" strips, subcut 8 - 1 1/2" x 11 1/2", 2 - 1 1/2" x 16", and 2 - 1 1/2" x 21 1/2"

Fabric F - BINDING - cut 6 - 2 1/4" strips, sew end to end and press in half

Fabric G - cut 5 - 1 3/4" strips, sew end to end and subcut 2 - 1 3/4" x 42 1/2" (TOP and BOTTOM) and 2 - 1 3/4" x 45 1/2" (SIDES)

Fabric H - cut 2 - 6 1/8" strips, subcut 8 - 6 1/8" squares, cut in half diagonally  for 16 triangles

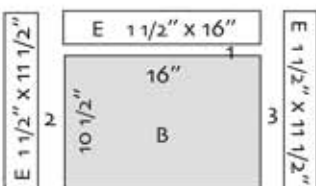
2. Piecing Order:

1. Make 16 - D/H Half Square Triangles - 5 1/4" finished (5 3/4" unf.). Next, sew 8 units together for each TOP and BOTTOM border.



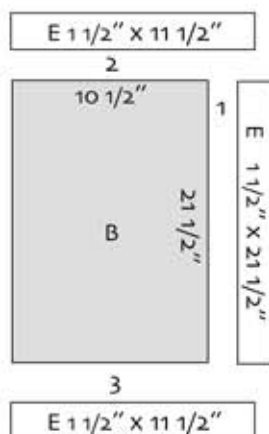
make 2

2. Sew borders (D) to three sides of B rectangles. Follow numerical order according to the diagrams:

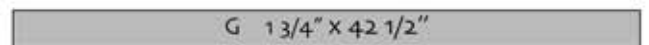
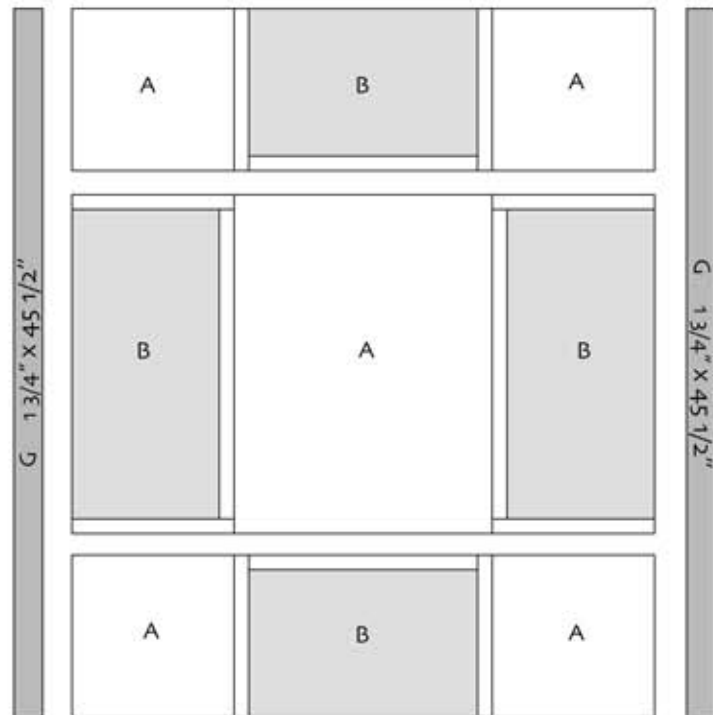
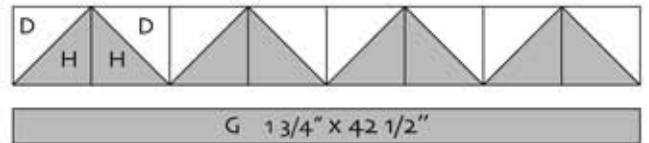


Make 2 - TOP and BOTTOM

Make 2 - SIDES



3. Sew center of quilt together by rows. Next, sew border (G) to the quilt, SIDES first, then TOP and BOTTOM. Last, sew rows of Half Square Triangles (D/H) to the TOP and BOTTOM of the quilt.



4. Quilt measures approximately 42 1/2" x 59". Make backing (Fabric C) at least 6" larger than top. Baste together top, batting and backing. Quilt as desired.