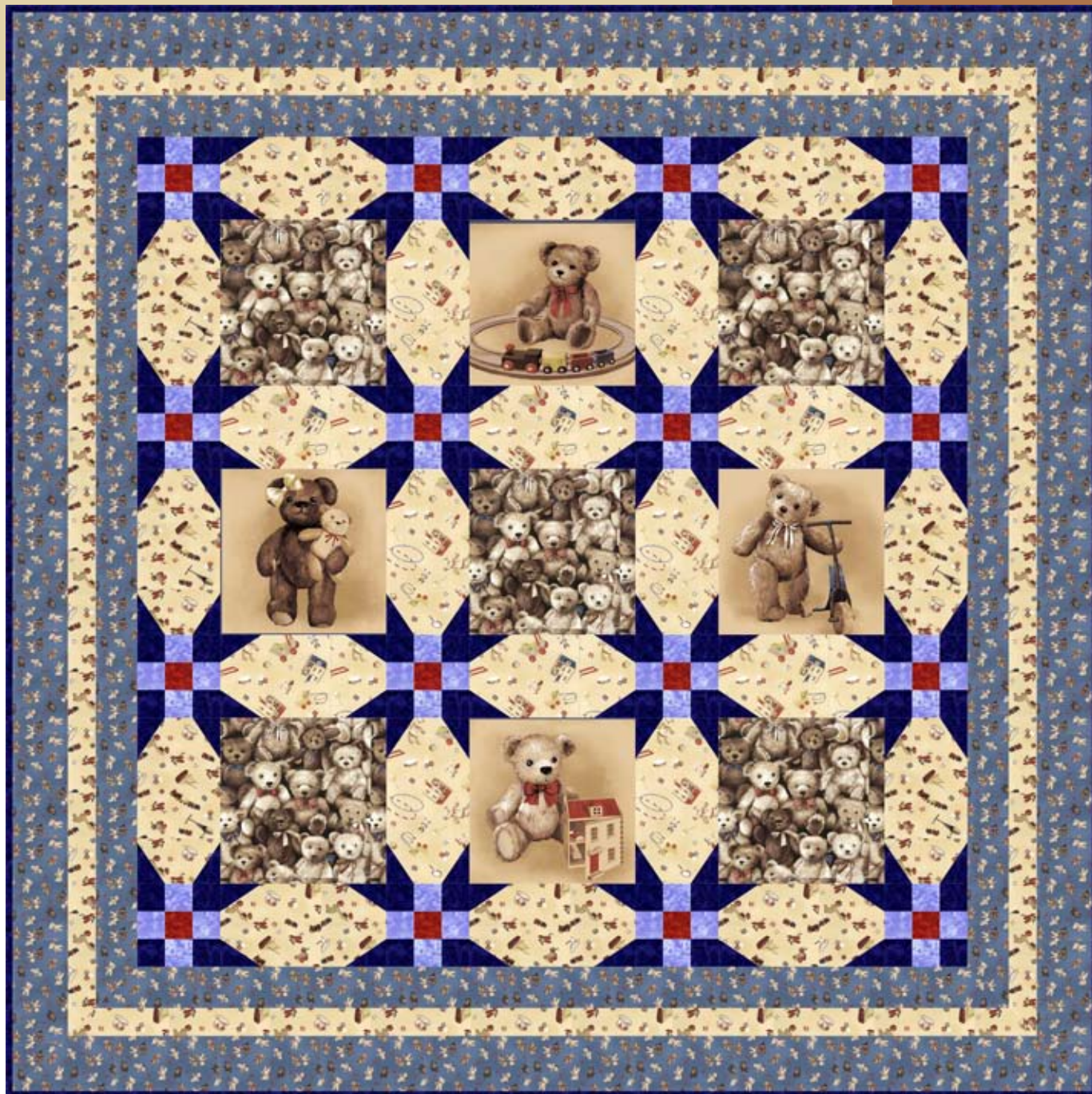


# Bear With Me



Finished size 78 1/2" x 78 1/2"



Designed by Susan L. Meyer  
[www.susiequilting.com](http://www.susiequilting.com)

# Bear With Me

## Cutting Directions:

Fabric A – One teddy bear panel with four different designs (approximately 1 yard)  
Cut panel to center the four different teddy bears in 12 1/2" squares.

Fabric B - Large teddy bears 3/4 yard  
Cut (2) strips 12 1/2" by WOF; Subcut into (5) - 12 1/2" squares  
Backing 4 1/3 yards - Cut 2 strips 78" by WOF

Fabric C – Cream with toys 3/4 yard  
Cut (2) strips 12 1/2" by WOF; Subcut each strip into (6) rectangles 12 1/2" x 6 1/2"

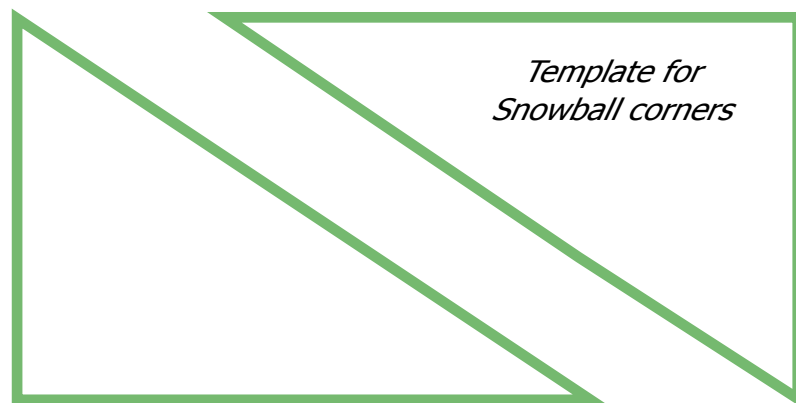
Fabric D – Blue with small teddy bears 2 1/4 yards  
Cut (2) inner borders 3 1/2" by 60 1/2"  
Cut (2) inner borders 3 1/2" by 66 1/2"  
Cut (2) outer borders 4 1/2" by 70 1/2"  
Cut (2) outer borders 4 1/2" by 78 1/2"

Fabric E – Cream with toys 1 3/8 yards  
Cut (2) strips 12 1/2" by WOF; Subcut each strip into (6) rectangles 12 1/2" x 6 1/2"  
Cut (8) strips 2 1/2" by WOF

Fabric F – Rust 1/8 yard  
Cut (1) strip 2 1/2" by WOF

Fabric G – Navy 1 1/8 yards  
Cut (2) strips 4" by WOF; subcut into (24) rectangles 4" x 2 3/4"  
Cut (4) strips 2 1/2" by WOF  
Binding cut (7) strips 2 1/2" by WOF

Fabric H – Blue 1/3 yard  
Cut (4) strips 2 1/2" by WOF



## 9 Patch Blocks:

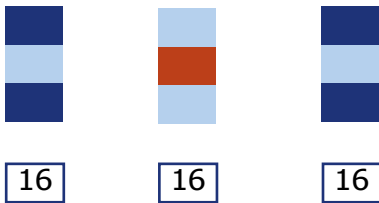
1. With 1/4" seams make one strip set using the 2 1/2" strip of Fabric F and two 2 1/2" strips of Fabric H. Press toward the center strip Fabric F



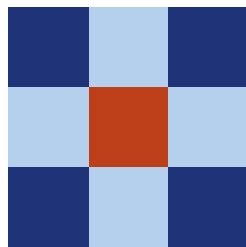
2. Make two more matching strip sets each using one 2 1/2" strip of Fabric G and two 2 1/2" strips of Fabric H. Press away from the center strip H.



3. From each strip set cut (16) 2 1/2" patches.



4. Sew one patch from each strip set together to make one 9 Patch square. Press seams open. Make 16.



## Snowball Sashing Rectangles:

1. Cut (12) Fabric G rectangles in half diagonally one direction and (12) the other direction.



2. Use the sashing template from page 2 to pin a Fabric G triangle in place on one corner of Fabric C. Note: there will be "dog ears" hanging over the edges of Rectangle C.



3. Sew 1/4" from long raw edge of Fabric G triangle.



4. Trim Fabric C along edge of Fabric G.



5. Press triangle G away from center of rectangle.



6. Repeat steps 1-5 for remaining three corners.



7. Make 12 using Fabric C and make 12 using Fabric E

## Center Assembly:

Following the chart below and the diagram on page 5, sew blocks together into rows. Press even row seams to the right and odd rows seams to the left. Remember to match block intersections when sewing rows together.

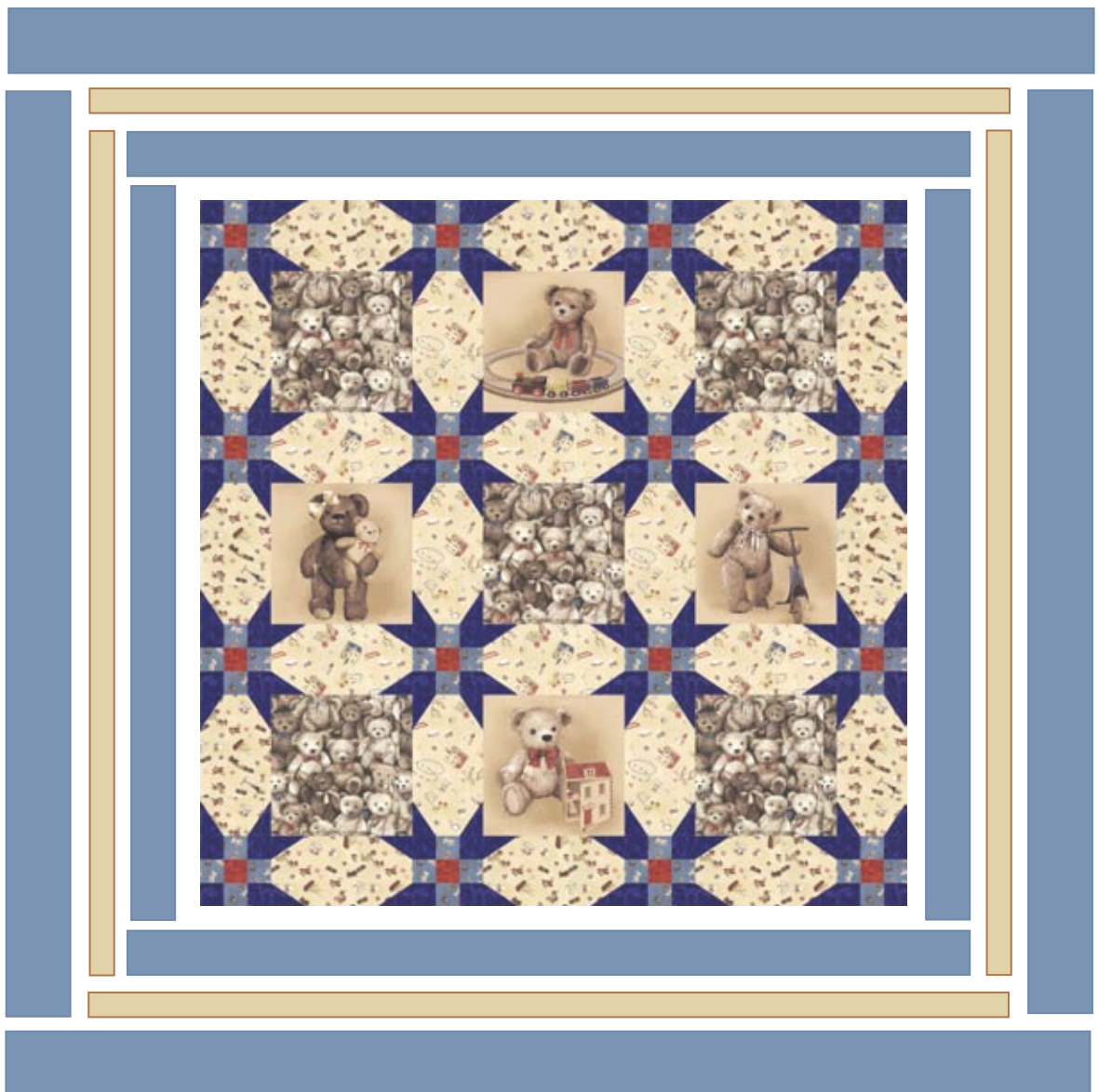
Row 1	Row 2	Row 3	Row 4	Row 5	Row 6	Row 7
9 Patch	Rectangle E	9 Patch	Rectangle E	9 Patch	Rectangle E	9 Patch
Rectangle E	Square B	Rectangle C	Doll Teddy	Rectangle C	Square B	Rectangle E
9 Patch	Rectangle C	9 Patch	Rectangle C	9 Patch	Rectangle C	9 Patch
Rectangle E	Train Teddy	Rectangle C	Square B	Rectangle C	House Teddy	Rectangle E
9 Patch	Rectangle C	9 Patch	Rectangle C	9 Patch	Rectangle C	9 Patch
Rectangle E	Square B	Rectangle C	Wheel Teddy	Rectangle C	Square B	Rectangle E
9 Patch	Rectangle E	9 Patch	Rectangle E	9 Patch	Rectangle E	9 Patch

Center  
Assembly  
Diagram



## Border Assembly:

1. Sew 3 1/2" x 60 1/2" Fabric D borders to each side. Press seams away from the center.
2. Sew 3 1/2" x 66 1/2" Fabric D borders to top and bottom. Press seams away from the center.
3. Sew 2 pieces of the Middle Border Fabric E together along short sides. Make 4.
4. Cut two pieces to measure 2 1/2" x 66 1/2" and two pieces to measure 2 1/2" x 70 1/2".
5. Sew shorter pieces of Fabric E to the sides. Press seams away from the center.
6. Sew Longer pieces of Fabric E to the top and the bottom. Press seams away from the center.
7. Sew 4 1/2" x 70 1/2" Fabric D borders to each side. Press seams away from the center.
8. Sew 4 1/2" x 78 1/2" Fabric D borders to top and bottom. Press seams away from the center.



## Finishing:

1. Layer quilt top with batting and backing, then quilt as desired.
2. Piece binding Fabric G into one continuous strip. Press seams open. Press in half length wise.
3. Trim quilt and bind using your favorite method.

# Bear With Me from Fabri-Quilt



Fabric A - 1 panel (approx. 1 yard)  
Fussy Cut Blocks  
style 120-11431



Fabric B - 3/4 yard  
Big Squares  
style 112-11381  
Backing - 4 1/3 yards



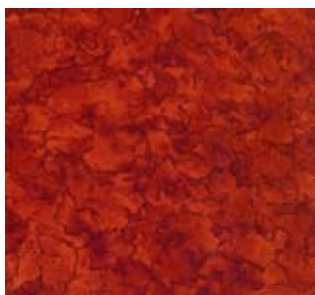
Fabric C - 3/4 yard  
Snowball  
style 112-11411



Fabric D - 2 1/4 yard  
Inner and Outer Border  
style 112-11401



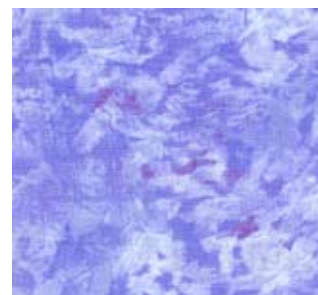
Fabric E - 1 3/8 yards  
Snowball, Middle Border  
style 112-11391



Fabric F - 1/8 yard  
9 Patch  
style 120-964522



Fabric G - 1 1/8 yards  
9 Patch, Snowball and Binding  
style 120-10026



Fabric H - 1/3 yard  
9 Patch  
style 120-66532